

A NEW COMBINATION IN *BUCKLANDIELLA* (GRIMMIACEAE)

HALINA BEDNAREK-OCHYRA & RYSZARD OCHYRA

Halina Bednarek-Ochyra & Ryszard Ochyra, Laboratory of Bryology, Institute of Botany, Polish Academy of Sciences, Lubicz 46, 31-512 Kraków, Poland; e-mails: h.bednarek@botany.pl & r.ochyra@botany.pl

Racomitrium crumianum Fife is a distinct species which is immediately distinguished from all congeners by its caducous leaf apices which are readily detached as propagules. This is a unique feature in the grimmialean mosses, in contrast to the pottialean mosses in which leaves gradually or abruptly narrow to a fragile and readily falling apex are a characteristic feature of a number of species in various genera, for example *Tortella fragilis* (Drumm.) Limpr. and *Syntrichia sarconeurum* Ochyra & R. H. Zander, an Antarctic endemic species (Ochyra *et al.* 2008). The latter was long considered to be a member of the separate genus *Sarconeurum* Bryhn until that was merged with *Syntrichia* Brid. sect. *Aesiotortula* R. H. Zander (Ochyra & Zander 2007).

Racomitrium crumianum was only recently described from New Zealand (Fife 1984) and it is scattered in the alpine zone in the South Island. Although the species is known only in sterile

condition, it is undoubtedly a member of *Bucklandiella* Roiv., one of three segregates of the traditionally conceived genus *Racomitrium* Brid. (Ochyra *et al.* 2003). Thus, the following transfer of this species to *Bucklandiella* is necessary.

Bucklandiella crumiana (Fife) Bednarek-Ochyra & Ochyra, *comb. nov.*

BASIONYM: *Racomitrium crumianum* Fife, New Zealand J. Bot. **22**: 1, f. 1–13. 1984. TYPE CITATION: New Zealand, South Island, Nelson Dist.: headwaters of Granity Creek on NW flank of Lookout Range, 41°31'S, 172°01'E, on moist, exposed granite beside rivulet with *Racocarpus* (sic!) *purpurascens* and *Drosera arcturi*; steep, N-facing subalpine slope with granite outcrops dominated by *Chionochloa australis*, *Dracophyllum longifolium*, *Hebe pauciramosa* var. *masonae*, and *Phormium cookianum*, 1342 m a.s.l., 24 Jan 1983 Fife 5148. HOLOTYPE: 'Botany Division, D.S.I.R., New Zealand Bryophytes of New Zealand *Racomitrium crumianum* Fife, sp. nov. Holotype New Zealand, S. Is., Northwest Nelson, headwaters of Granity Creek on NW flank of Lookout Range S29 996993 (41°31'S, 172°01'E). Steep, N-facing subalpine slope with granite outcrops and rivulets, vegetation dominated by *Chionochloa australis*, *Dracophyllum longifolium*, *Hebe pauciramosa* var. *masonae* & *Phormium cookianum*. 4100–4400 ft. elev., ca. 200 ft. above tree line. Grid. ref.: S29 996993 leg. Allan J. Fife 5148 Date: January 24, 1983' – CHR! (Fig. 1); ISOTYPES: MICH (*non vidi*), NSW!

ACKNOWLEDGEMENTS. We thank the curators of CHR and NSW for kindly sending the type material of *Bucklandiella crumiana* on loan, and to Arthur Copping (Roydon, Diss, UK) for checking the English. This study was partly financed through the statutory

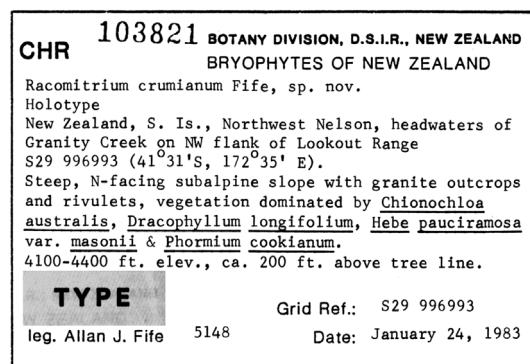


Fig. 1. The label of the holotype of *Racomitrium crumianum* Fife (CHR).

fund of the Institute of Botany of the Polish Academy of Sciences and it also gained financial support from the Polish Ministry of Science and Higher Education through grants No. N N 303 796940 for the first author and No. N N 303 469338 for the second author and this assistance is gratefully acknowledged.

REFERENCES

- FIFE A. J. 1984. Records of new or otherwise interesting mosses in New Zealand, including a new species of *Racomitrium*. *New Zealand J. Bot.* **22**: 1–6.
- OCHYRA R. & ZANDER R. H. 2007. Is *Tortula lithophila* conspecific with *Sarconeurum glaciale* (Bryopsida: Pot-tiaceae)? *Fragm. Florist. Geobot. Polonica* **14**: 209–212 (in Polish with extensive English summary).
- OCHYRA R., LEWIS SMITH R. I. & BEDNAREK-OCHYRA H. 2008. The illustrated moss flora of Antarctica. Cambridge University Press, Cambridge.
- OCHYRA R., ŻARNOWIEC J. & BEDNAREK-OCHYRA H. 2003. Census catalogue of Polish mosses. Institute of Botany, Polish Academy of Sciences, Kraków.

Received 10 June 2011